

GSM VoIP Gateway Solution(32-Port ~ 48-Port)



AddPac GSM VoIP Gateway solution provides multi-port (32~48Port) GSM VoIP gateway for GSM call termination service. AddPac GSM VoIP gateway solution is designed on the basis of hardware architecture to provide GSM VoIP service. It also provides various voice codec such as G.711, G.726, G.729, G.723.1 along with SIP, and H.323 multiple VoIP signaling protocol. AddPac GSM VoIP gateway devices are all programmable RISC CPU + DSP structure so that constant software development/additional feature upgrades is possible to cope with customer requirements/environments. Moreover, GSM VoIP Gateway Products support the VTO(VoIP Traffic Optimizer) Service Client Function beside GSM VoIP Gateway Service. AddPac VTO service is a high performance VoIP Traffic Optimization service which can reduce bandwidth usage in VOIP call termination. This means that call termination service provider can deliver improved VoIP calling service with much lower VoIP traffic cost. Also, AddPac VTO service supports the VoIP anti-blocking service features and can help to provide mobile VoIP termination service in locations where VoIP service is completely blocked. In addition to basic VoIP Traffic Optimization service features, AddPac VTO service supports real-time VoIP traffic monitoring service such as VoIP packet loss rate, up/down link status, etc in between VTO server and VTO client site each. This can help to provide real-time VTO technical support service. AddPac VTO service is very easy to use because AddPac GSM VoIP gateway provides the VTO client service features internally besides GSM VoIP gateway service features. This means there is no need an external Linux server for VTO service and complex installation procedure. User just does new firmware upgrade for AddPac GSM gateway VTO client package. GSM VoIP gateway service concept supporting VTO client service is a new architecture and design concept. This concept reduces the hop count and enhances the VoIP QoS like as jitter, delay. As a result, this architecture increases the ASR, ACD that are most important factors in call termination service area.

Major Feature

Overall Features

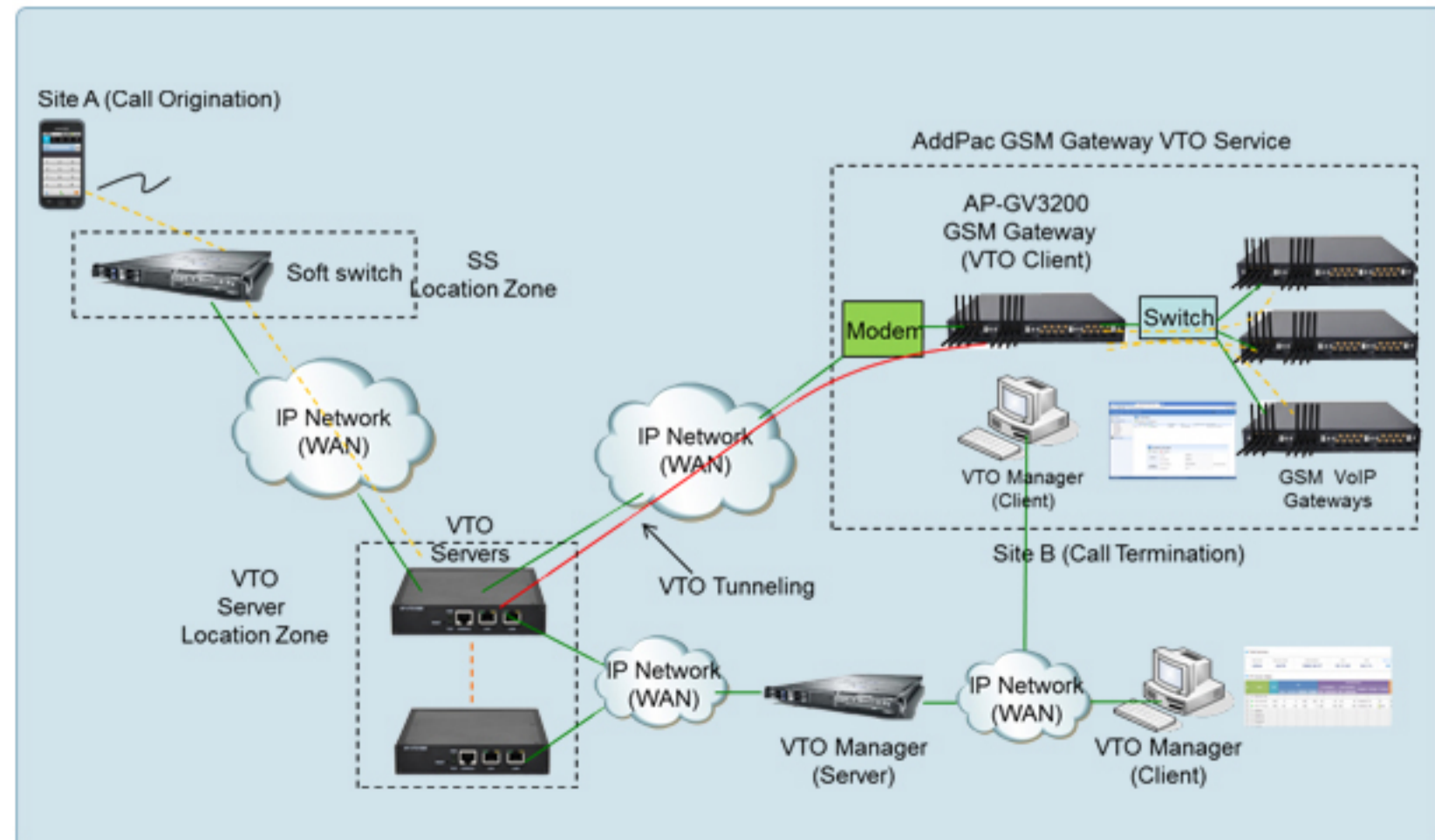
- > AddPac VTO(VoIP Traffic Optimizer) Service Client : VTO Plug & Play Service, Anti-VOIP, Bandwidth Compression, VoIP Traffic Monitoring (Packet loss, round-trip time), etc
- > Renew the Main Window
- > Mobile Statistics Display using Graph Chart (ASR, ACD, etc)
- > Several Enhancements for ASR Improvement (zombie call, etc)
- > Human Behavior Call Pattern Modeling Algorithm for Anti-SIM Block
- > High-performance VoIP Modular Architecture
- > Flash Memory: 512MB NAND, SDRAM 128MB DDR2
- > GSM voice interface module : 8-Port GSM Module
- > Digital voice interface module: 1-2Port Digital E1/T1 Voice Module
- > Two(2) port 10/100Mbps fast Ethernet interface
- > SIP, H.323 concurrent dual stack
- > Support Voice Processing Features
- > VAD, DTMF,CNG,G.168
- > G.723.1,G.729A,G.711 Voice Compressions
- > High-performance IP-Routing Capability with Reliability
- > Static and IEEE 802.1Q VLAN Routing Protocols including VRRP
- > Traffic Queuing, and SNMP MIB v2 for Network Management Features
- > Standard & Extended Access List for Security Functions
- > Essential Scalability Features such as DHCP Server & Relay, NAT/PAT, IEEE Transparent Bridging,
- > IP Accounting, and Debugging/Diagnostics, etc.
- > DNSProxy Support



GSM VoIP Gateway Comparison Table

Model	AP-GV3300	AP-GV3200	AP-GV3100
Available Modules (Only red color module supports SIM client)	AP-N5-GSM8I AP-N5-GSM8UI AP-N5-GSM8SI AP-N5-1E1/T1 AP-N5-2E1/T1	AP-N5-GSM8I AP-N5-GSM8UI AP-N5-GSM8SI AP-N5-1E1/T1 AP-N5-2E1/T1	AP-N5-GSM8I AP-N5-GSM8UI AP-N5-GSM8SI
GSM Channel	Up to 48 Channel	Up to 40 Channel	Up to 32 Channel
Module Slot	Six(6) Module Slots for GSM,E1/T1 Module, etc	Five(5) Module Slots for GSM,E1/T1 Module, etc	Four(4) Module Slots for GSM Module, etc
LAN Port	2	2	2
Console	1	1	1
Power	Single PSU	Single PSU	Single PSU

Network Diagram



AddPac Technology Co.,Ltd.

AddPac Texhnology (Korea-Head Office)  
Phone +8225683848  
Email sales@addpac.com